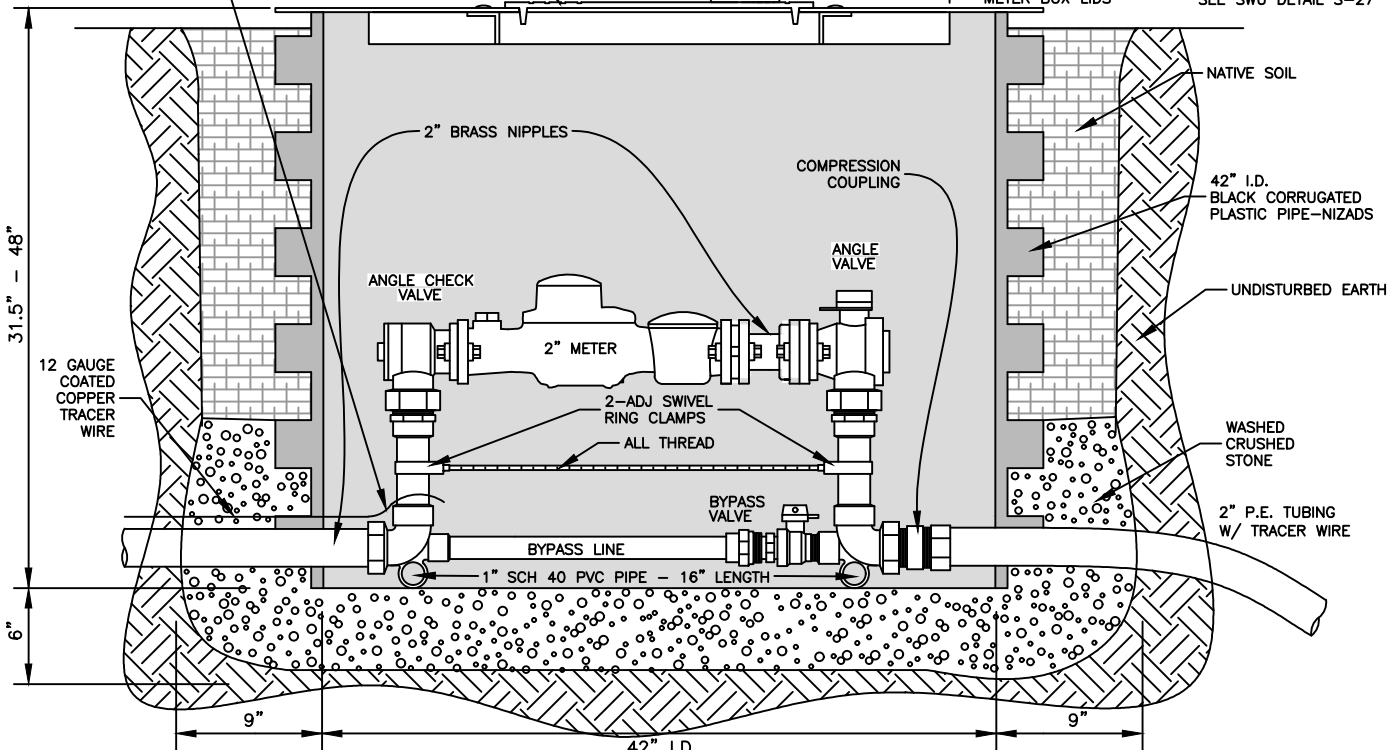


LOOP MIN. 24" LENGTH
OF 12 GAUGE COATED
COPPER TRACER WIRE

LID AND FRAME TO BE AT
FINISHED GROUND LEVEL



TYPICAL 2-INCH METER SETTING

N.T.S.
S-26

*METER PER SWU REQUIREMENT.

NOTE: ALL MATERIALS INSTALLED IN POTABLE WATER
SYSTEMS ARE REQUIRED TO COMPLY WITH THE FEDERAL
DEFINITION OF "LEAD FREE" CONTAINED IN PUBLIC LAW
111-380.

MATERIAL LIST

QTY	DESCRIPTION	CATALOG / PART NUMBER
1	METER SETTER	VBH-77-12B-11-77-NL
1	COMPRESSION COUPLING	FORD (C84-77-NL)
2	PVC PIPE-16"	1" SCH-40
2	ADJ SWIVEL RING CLAMP	2" NFPA PLATD
1	ALL THREAD	3/8"-16 x 36"
4	BOLTS AND NUTS	3/4"-10 x 2 3/4" (BOLTS) 3/4"-10 (HEX NUTS)
1	2" FEMALE FLANGE	FORD (CF31-77-NL)
2	BRASS NIPPLES	NBR-0812 2"x12"
1	DRESSER COUPLING	SMITH-BLAIR 92600000250000
1	METER BOX	42"Ø NIZADS CORRUGATED PIPE
1	METER BOX LIDS	SEE SWU DETAIL S-27



STANDARD DETAILS
FOR
WATER AND SEWER CONSTRUCTION