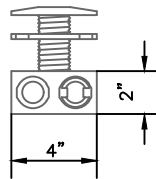
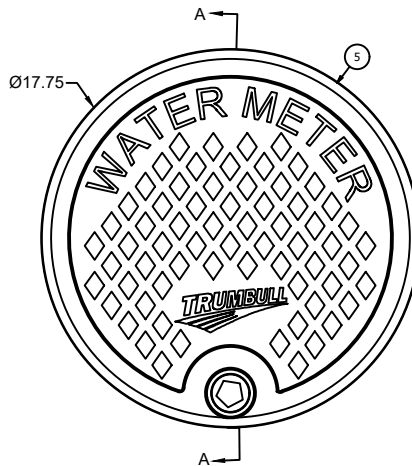
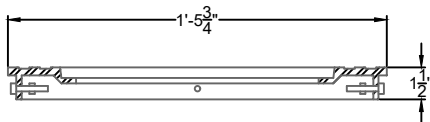
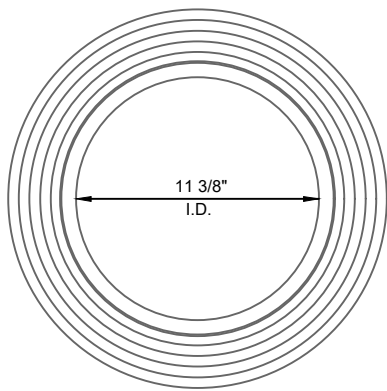


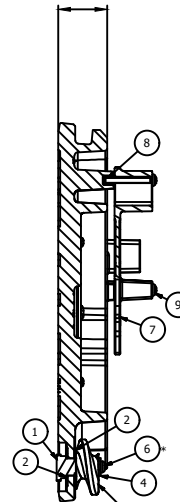
**METER BOX RING**

MATERIAL: CAST IRON



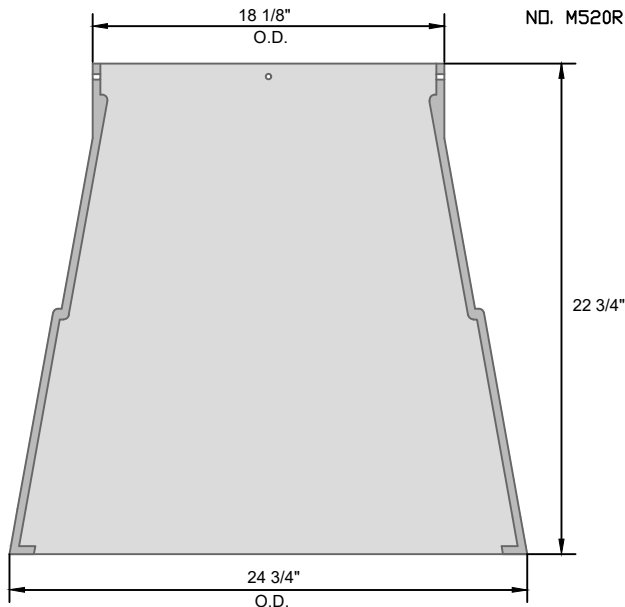
**MXU ANTENNAE**  
MATERIAL: BLACK PLASTIC  
NO. M520R-C1-TC-X-T

SPECIAL UNDERCUT RIM  
TO SPRINGDALE,  
AR REQUIREMENTS

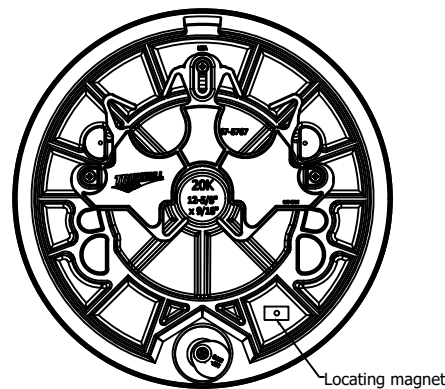


SECTION A-A

PARTS LIST				
ITEM	QTY	PART NUMBER	DESCRIPTION	MATERIAL
1	1	167-0074	Pentagon Bolt	Brass
2	2	167-3009	Washer	UHMWPE
3	1	167-5770	1.840" Worm Gear, Style "P"	Nylon
4	1	M5 Wide	Metric Plain Washers	Stainless Steel
5	1	8440	12-5/8" OD Meter Lid	Polypropylene
6	1	M5 x 0.8 x 12	Machine Screw	Stainless Steel
7	1	367-5791	Retainer Bracket	HDPE
8	3	M5 x 0.8	Threaded Inserts	Brass
9	3	M5 x 0.8 x 40	Machine Screw	Steel, Mild



**METER BOX**  
MATERIAL: WHITE PLASTIC  
BOX WITH RING  
EAST JORDAN IRON WORKS  
34P24 A-TYPE  
18X24X24D  
OR APPROVED EQUAL



**AUTOMATED LOCKING COVER**

MATERIAL: POLYMER LID  
TRUMBULL MANUFACTURING  
NO. 8440

**STANDARD METER BOX**

N.T.S.  
S22



526 OAK AVENUE • P.O. BOX 769 • SPRINGDALE, ARKANSAS • 72765-0769 • (479) 751-5751

STANDARD DETAILS  
FOR  
WATER AND SEWER CONSTRUCTION

DRAWN BY:	TLS	DRAWING NO.:	S-22	DATE:	AUGUST 2025
-----------	-----	--------------	------	-------	-------------