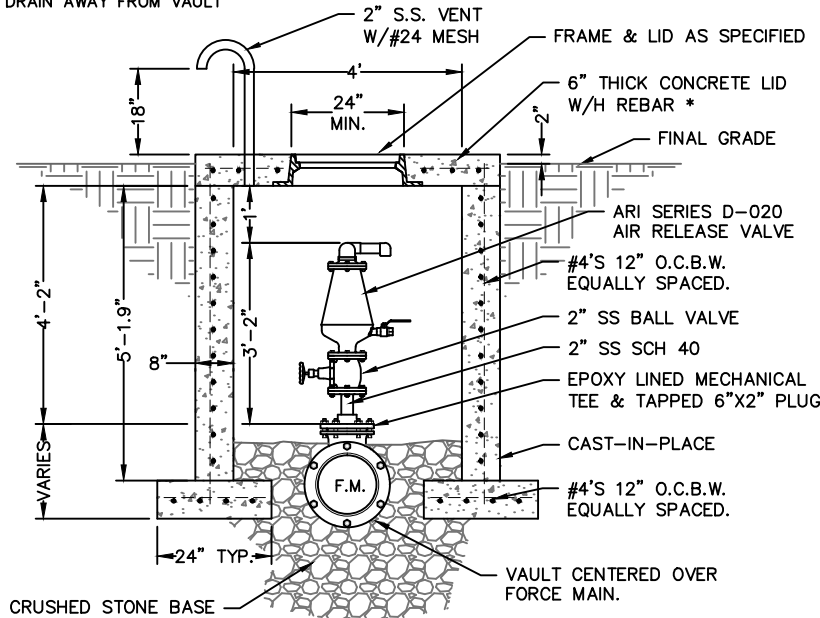


NOTE:
TOP OF VAULT TO BE APPROX. 2" ABOVE FINAL GRADE WITH SOIL SHAPED TO DRAIN AWAY FROM VAULT

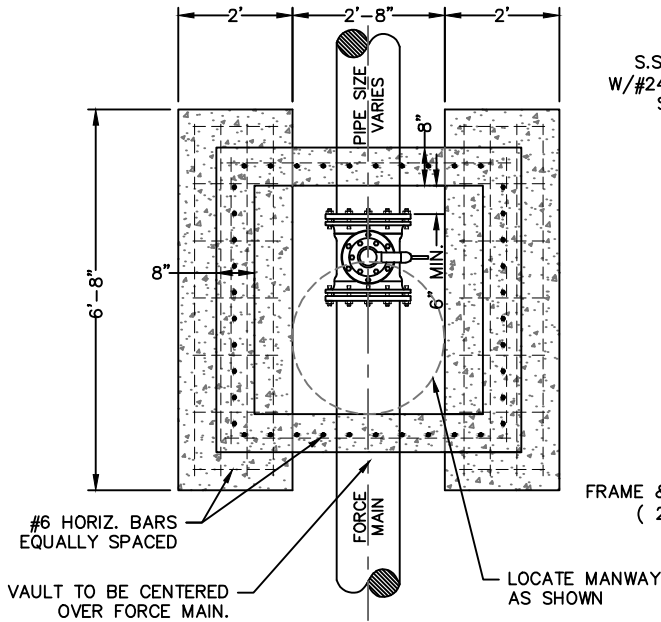


SECTION VIEW

* NOT FOR TRAFFIC USE

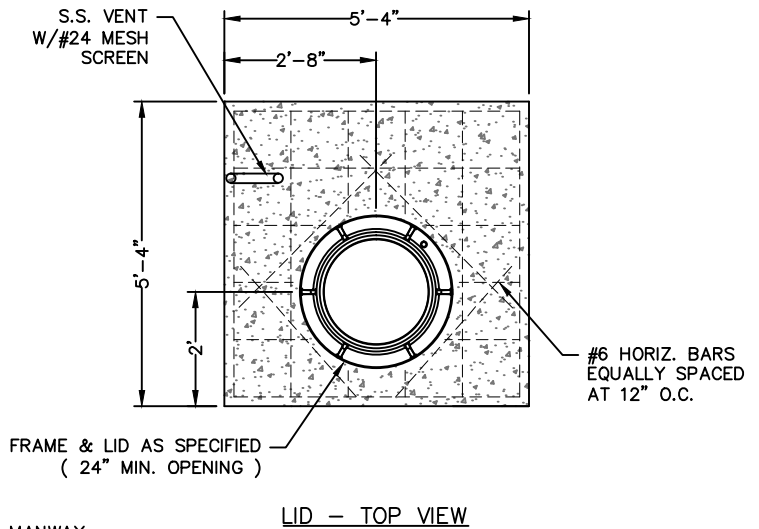
NOTE:
CONTRACTOR TO FOLLOW STANDARD LAY DEPTHS: HOWEVER F.M. DEPTH TO BE ADJUSTED TO ALLOW DEPTHS AS SHOWN. AIR/VACUUM RELEASE ASSEMBLIES TO BE LOCATED AT HIGHPOINT AS SHOWN ON PLANS OR AS DIRECTED BY ENGINEER.

NOTE:
EPOXY COAT ALL INTERIOR CONCRETE SURFACES. SEE SPECIFICATION SECTION T20 - PROTECTIVE COATING FOR MANHOLES AND OTHER STRUCTURES.



VAULT - TOP VIEW

(LID REMOVED - SEE LID DETAIL)



LID - TOP VIEW

AIR/VACUUM RELEASE VALVE & VAULT

N.T.S.

SPRINGDALE
WATER UTILITIES

STANDARD DETAILS
FOR
WATER AND SEWER CONSTRUCTION

526 OAK AVENUE • P.O. BOX 769 • SPRINGDALE, ARKANSAS • 72765-0769 • (479) 751-5751

DRAWN BY: CAG

DRAWING NO: S-33

DATE: AUGUST 2014