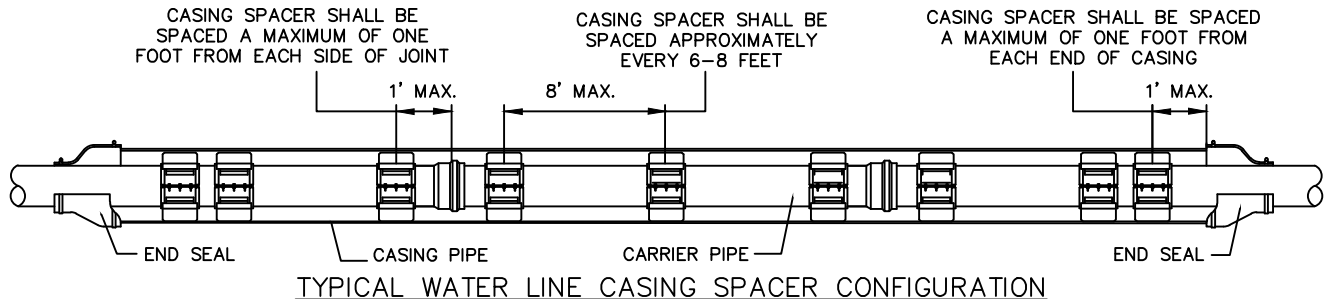
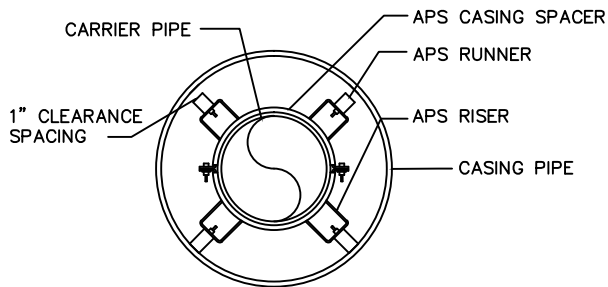


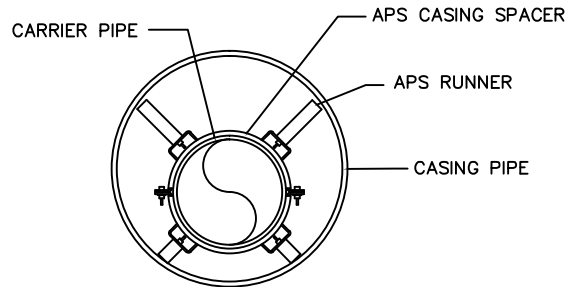
TYPICAL SEWER LINE CASING SPACER CONFIGURATION



TYPICAL WATER LINE CASING SPACER CONFIGURATION



TYPICAL WATER LINE END VIEW



TYPICAL SEWER LINE END VIEW

ENCASEMENT DETAILS

N.T.S. NOTES:

1. SPACERS SHALL BE MODEL SSI OR SSIM AS MANUFACTURED BY ADVANCE PRODUCTS & SYSTEMS (APS) AS SPECIFIED.
2. QUANTITY OF RUNNERS SHALL BE IN ACCORDANCE WITH CARRIER PIPE SIZE AS FOLLOWS:  
 TO 14" DIAMETER - 4 RUNNERS  
 16" TO 36" DIAMETER - 6 RUNNERS  
 38" TO 48" DIAMETER - 8 RUNNERS
3. DIMENSIONS BETWEEN SPACERS SHALL BE AS FOLLOWS:  
STAINLESS STEEL - 6 TO 8 FEET.
4. WIDTH OF SPACERS SHALL BE IN ACCORDANCE WITH CARRIER PIPE SIZE AS FOLLOWS:  
 TO 14" DIAMETER - 8" WIDTH  
 16" AND LARGER DIAMETER - 12" WIDTH
5. A MINIMUM OF THREE SPACERS PER FULL JOINT OF PIPE.
6. WATER LINES SHALL BE "CENTERED" IN CASING.
7. SEWER LINES SHALL BE HELD TO SPECIFIED SLOPE.
8. ALL D.I. CARRIER PIPE MUST HAVE FIELD LOCK GASKETS INSTALLED WITHIN THE CASING PIPE.

ENCASEMENT/CARRIER PIPE SIZING CHART

WATER AND SEWER MAINS SHALL BE SPECIAL CLASS 50 DUCTILE IRON PIPE (SEWER MAINS SHALL BE EPOXY LINED)

CARRIER NOM. SIZE	CARRIER PIPE O.D.	CARRIER BELL O.D.	CASING NOM. SIZE*
6"	6.90	11.06	12"
8"	9.05	13.31	16"
10"	13.20	15.62	20"
12"	13.20	17.88	20"
14"	15.30	20.25	24"
16"	17.40	22.50	24"
18"	19.50	24.75	30"
20"	21.60	27.00	30"
24"	25.80	31.50	36"

\* ALL ENCASEMENT PIPE SHALL BE NEW AND HAVE A MINIMUM WALL THICKNESS OF 0.25 INCHES.



STANDARD DETAILS  
FOR  
WATER AND SEWER CONSTRUCTION